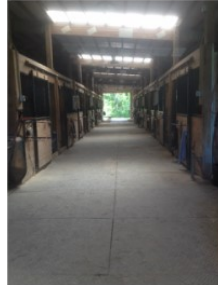


# FSCAP Certified Steward

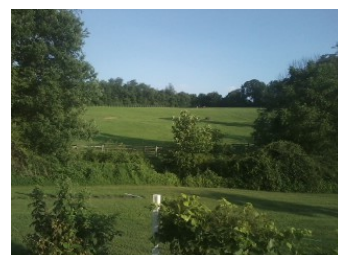
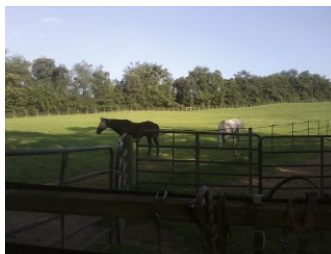
## Separate Peace Farm Bill and Pat Hahn



Bill and Pat Hahn established Separate Peace Farm in 2001. Their seventy-seven acre horse farm is a quiet, family run operation. The farm includes boarding facility features a nineteen stall horse barn with indoor and outdoor riding arenas.

Bill Hahn served as District Manager with the Baltimore County Soil Conservation District for many years. The Hahns have used this background and worked with their local county soil conservation district to implement many best management practices on their own farm. Some of these practices consist of a waste storage facility, a pond, forage harvest management and an agricultural chemical facility.

As Bill has said, "We have always strived to use good conservation practices on our farm and it has been good for us." Separate Peace Farm is located near Westminster in Carroll County. For more information, please visit <http://separatepeacefarm.weebly.com/>.



Farm  
Stewardship Certification  
and Assessment Program (FSCAP)  
Maryland Association of Soil Conservation Districts  
209 Jarman Branch Dr., Centreville, MD 21617 (p) 443-262-8491  
[www.mascd.net](http://www.mascd.net) · [gft@gtalbert.com](mailto:gft@gtalbert.com) · [Lindsay.mdag@gmail.com](mailto:Lindsay.mdag@gmail.com)